

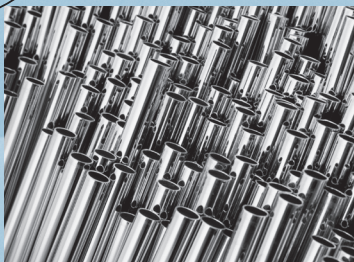
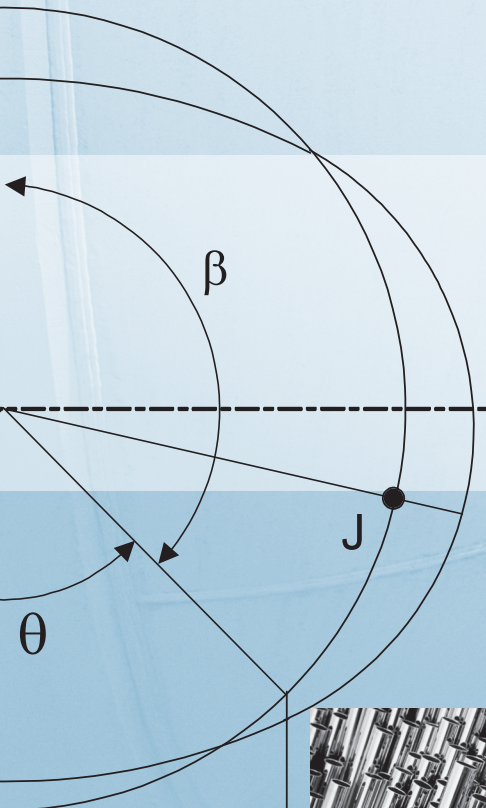
# 2010 ASME Boiler and Pressure Vessel Code

AN INTERNATIONAL CODE

## III

### Division 5 High Temperature Reactors

# Rules for Construction of Nuclear Facility Components



AN INTERNATIONAL CODE

# 2010 ASME Boiler & Pressure Vessel Code

2011 First Issuance

November 1, 2011

## III

### Division 5

## High Temperature Reactors

## RULES FOR CONSTRUCTION OF NUCLEAR FACILITY COMPONENTS

ASME Boiler and Pressure Vessel Committee on  
Construction of Nuclear Facility Components



The American Society of  
Mechanical Engineers

Three Park Avenue • New York, NY • 10016 USA

Date of Issuance: November 1, 2011

This international code or standard was developed under procedures accredited as meeting the criteria for American National Standards and it is an American National Standard. The Standards Committee that approved the code or standard was balanced to assure that individuals from competent and concerned interests have had an opportunity to participate. The proposed code or standard was made available for public review and comment that provides an opportunity for additional public input from industry, academia, regulatory agencies, and the public at large.

ASME does not “approve,” “rate,” or “endorse” any item, construction, proprietary device, or activity.

ASME does not take any position with respect to the validity of any patent rights asserted in connection with any items mentioned in this document, and does not undertake to insure anyone utilizing a standard against liability for infringement of any applicable letters patent, nor assume any such liability. Users of a code or standard are expressly advised that determination of the validity of any such patent rights, and the risk of infringement of such rights, is entirely their own responsibility.

Participation by federal agency representative(s) or person(s) affiliated with industry is not to be interpreted as government or industry endorsement of this code or standard.

ASME accepts responsibility for only those interpretations of this document issued in accordance with the established ASME procedures and policies, which precludes the issuance of interpretations by individuals.

The endnotes in this document are part of this American National Standard.



ASME collective membership mark

The above ASME symbol is registered in the U.S. Patent Office.

“ASME” is a trademark of the American Society of Mechanical Engineers.

No part of this document may be reproduced in any form, in an electronic retrieval system or otherwise, without the prior written permission of the publisher.

Library of Congress Catalog Card Number: 56-3934  
Printed in the United States of America

The American Society of Mechanical Engineers  
Three Park Avenue, New York, NY 10016-5990

Copyright © 2011 by  
THE AMERICAN SOCIETY OF MECHANICAL ENGINEERS  
All rights reserved

# CONTENTS

List of Sections .....	xvi
Foreword .....	xviii
Statement of Policy on the Use of the Certification Mark and Code Authorization in Advertising .....	xx
Statement of Policy on the Use of ASME Marking to Identify Manufactured Items .....	xx
Submission of Technical Inquiries to the Boiler and Pressure Vessel Committee — Mandatory .....	xxi
Personnel .....	xxiii
Organization of Section III .....	xxxv
Division 5 .....	xxxviii
<b>SUBSECTION HA</b> <b>GENERAL REQUIREMENTS</b> .....	1
<b>Subpart A</b> <b>Metallic Materials</b> .....	1
<b>Article HAA-1000</b> <b>Introduction</b> .....	1
HAA-1100            General .....	1
HAA-1110        Scope .....	1
HAA-1120        Definitions .....	1
HAA-1130        Limits of These Rules .....	1
<b>Table</b>	
HAA-1130-1        Values of $T_{max}$ for Various Classes of Permitted Materials .....	2
<b>Article HAA-2000</b> <b>Classification of Components and Supports</b> .....	3
HAA-2100            .....	3
HAA-2120        Purpose of Classifying Items of a Nuclear Power Plant .....	3
HAA-2130        Classifications and Rules of Division 5 .....	3
<b>Article HAA-7000</b> <b>Reference Standards</b> .....	4
HAA-7100            General Requirements .....	4
<b>Table</b>	
HAA-7100-1        Standards and Specifications Referenced in Division 5 Associated With Metallic Components .....	4
<b>Article HAA-8000</b> <b>Nameplates, Stamping With the Certification Mark, and Reports</b> .....	5
HAA-8100            Authorization to Perform Code Activities .....	5
HAA-8110        General .....	5
<b>Article HAA-9000</b> <b>Glossary</b> .....	6
HAA-9100            Introduction .....	6
HAA-9200            Definitions .....	6
<b>Subpart B</b> <b>Graphite Materials</b> .....	7
<b>Article HAB-1000</b> <b>Introduction</b> .....	7
HAB-1100            General .....	7
HAB-1110        Scope .....	7
HAB-1120        Definitions .....	7
HAB-1130        Limits of These Rules .....	7
HAB-1140        Use of Code Editions, Addenda, and Cases .....	7
HAB-1150        Units of Measurement .....	8

HAB-1200	General Requirements for Items and Installation .....	8
HAB-1210	Graphite Core Assembly .....	8
HAB-1220	Materials .....	8
HAB-1280	Installation .....	8
<b>Article HAB-2000</b>	<b>Classification of Graphite Core Components</b> .....	9
HAB-2100	General Requirements .....	9
HAB-2110	Scope .....	9
HAB-2130	Design Classes of Graphite Core Components .....	9
HAB-2140	Design Basis .....	9
<b>Article HAB-3000</b>	<b>Responsibilities and Duties</b> .....	11
HAB-3100	General .....	11
HAB-3110	Responsibilities vs. Legal Liabilities .....	11
HAB-3120	Certification .....	11
HAB-3200	Owner’s Responsibilities .....	11
HAB-3220	Categories of the Owner’s Responsibilities .....	11
HAB-3230	Owner’s Certificate .....	12
HAB-3240	Provision of Adequate Supporting Structures .....	12
HAB-3250	Provision of Design Specifications .....	12
HAB-3260	Review of Design Report .....	13
HAB-3280	Owner’s Data Report and Filing .....	13
HAB-3290	Owner’s Responsibility for Records .....	13
HAB-3300	Responsibilities of a Designer .....	14
HAB-3320	Categories of the Designer’s Responsibility .....	14
HAB-3340	Design Drawings and Construction Specification .....	14
HAB-3350	Requirements for Design Output Documents .....	15
HAB-3360	Certification of the Construction Specification, Design Drawings, and Design Report .....	15
HAB-3370	Revision of Design Drawings and Construction Specification .....	16
HAB-3380	Certification of Construction Report .....	16
HAB-3400	Responsibilities of a G Certificate Holder .....	16
HAB-3420	Categories of the G Certificate Holder’s Responsibilities .....	16
HAB-3430	Obtaining a Certificate .....	16
HAB-3440	Compliance With This Subpart and Subsection HH, Subpart A .....	16
HAB-3450	Construction Documents .....	16
HAB-3460	Responsibility for Quality Assurance .....	17
HAB-3800	Graphite Material Organization’s Quality System Program .....	17
HAB-3820	Certification or Qualification of Graphite Material Organizations .....	18
HAB-3830	Responsibilities of Graphite Material Organizations .....	18
HAB-3840	Evaluation of the Program .....	18
HAB-3850	Quality System Program Requirements .....	19
HAB-3860	Certification Requirements .....	24
<b>Table</b>		
HAB-3255-1	Document Distribution for Design and Construction of Graphite Core Components and Assemblies.....	14
<b>Article HAB-4000</b>	<b>Quality Assurance</b> .....	25
HAB-4100	Requirements .....	25
HAB-4110	Scope and Applicability .....	25
HAB-4120	Definitions .....	25
HAB-4130	Establishment and Implementation .....	25
<b>Tables</b>		
HAB-4134.17-1	Lifetime Quality Assurance Records .....	27
HAB-4134.17-2	Nonpermanent Quality Assurance Records .....	28

<b>Article HAB-5000</b>	<b>Authorized Inspection</b> .....	29
HAB-5100	Introduction .....	29
HAB-5110	Applicability .....	29
HAB-5120	Performance of Inspection .....	29
HAB-5130	Access for Inspection Agency Personnel .....	29
HAB-5200	Duties of Graphite Inspector .....	30
HAB-5210	General Inspection Duties .....	30
HAB-5220	Categories of Graphite Inspector’s Duties .....	30
HAB-5230	Scope of Work, Design Specifications, and Design Reports .....	30
HAB-5240	Quality Assurance Programs .....	30
HAB-5250	Qualification Records .....	31
HAB-5260	Materials and Graphite Core Components .....	31
HAB-5270	Examinations and Tests .....	31
HAB-5290	Data Reports and Construction Reports .....	31
HAB-5300	Responsibilities of the Authorized Inspection Agency .....	31
<b>Article HAB-7000</b>	<b>Reference Standards</b> .....	32
HAB-7100	General Requirements .....	32
<b>Table</b>		
HAB-7100	Standards and Specifications Referenced in This Subpart and Subsection HH, Subpart A.....	32
<b>Article HAB-8000</b>	<b>Certificates and Data Reports</b> .....	33
HAB-8100	Authorization to Perform Code Activities .....	33
HAB-8110	General .....	33
HAB-8120	Scope of Certificates .....	33
HAB-8130	Inspection Agreement Required .....	33
HAB-8140	Quality Assurance Program Requirements .....	33
HAB-8150	Application for Certification .....	33
HAB-8160	Evaluation .....	33
HAB-8170	Issuance .....	34
HAB-8180	Renewal .....	34
HAB-8200	Nameplates .....	34
HAB-8400	Data Reports .....	34
HAB-8410	General Requirements .....	34
HAB-8420	Owner’s Data Report .....	35
<b>Table</b>		
HAB-8100-1	Certificates Issued by the Society for Construction of Nuclear Graphite Core Components and Assemblies.....	34
<b>Article HAB-9000</b>	<b>Glossary</b> .....	36
HAB-9100	Introduction .....	36
HAB-9200	Definitions .....	36
<b>Mandatory Appendix</b>		
<b>HAB-I</b>	<b>Certificate Holder’s Data Report Forms, Instructions, and Application Forms for Certificates of Authorization</b> .....	38
<b>Subpart C</b>	<b>Composite Materials</b> .....	39
<b>Article HAC-1000</b>	<b>Introduction</b> .....	39
HAC-1100	General .....	39
HAC-1110	Scope .....	39

<b>SUBSECTION HB</b>	<b>CLASS A METALLIC PRESSURE BOUNDARY COMPONENTS .....</b>	<b>40</b>
<b>Subpart A</b>	<b>Low Temperature Service .....</b>	<b>40</b>
<b>Article HBA-1000</b>	<b>Introduction .....</b>	<b>40</b>
HBA-1100	General .....	40
HBA-1110	Scope .....	40
<b>Article HBA-8000</b>	<b>Nameplates, Stamping With the Certification Mark, and Reports .....</b>	<b>41</b>
HBA-8100	Requirements .....	41
<b>Subpart B</b>	<b>Elevated Temperature Service .....</b>	<b>42</b>
<b>Article HBB-1000</b>	<b>Introduction .....</b>	<b>42</b>
HBB-1100	General .....	42
HBB-1110	Scope .....	42
<b>Article HBB-8000</b>	<b>Nameplates, Stamping With the Certification Mark, and Reports .....</b>	<b>44</b>
HBB-8100	Requirements .....	44
 <b>Mandatory Appendices</b>		
<b>HBB-I</b>	<b>Use of SA-533 Type B, Class 1 Plate and SA-508 Grade 3, Class 1 Forgings and Their Weldments for Limited Elevated Temperature Service .....</b>	<b>45</b>
Article HBB-I-1000	Scope .....	45
Article HBB-I-2000	Material .....	46
Article HBB-I-3000	Design .....	47
Article HBB-I-4000	Fabrication and Installation .....	48
Article HBB-I-5000	Examination .....	49
Article HBB-I-6000	Testing .....	50
Article HBB-I-7000	Overpressure Protection .....	51
 <b>Figures</b>		
HBB-I-3000-1	$S_{mt}$ Values for SA-533 Type B, Class 1 and SA-508 Grade 3, Class 1 .....	52
HBB-I-3000-2	$S_t$ Allowable Stress Intensity Values for SA-533 Type B, Class 1 and SA-508 Grade 3, Class 1 .....	53
HBB-I-3000-3	Stress-to-Rupture (Minimum) for SA-533 Type B, Class 1 and SA-508 Grade 3, Class 1 .....	54
HBB-I-3000-4	Isochronous Stress–Strain Curves for 700°F (371°C) for SA-533 Type B, Class 1 and SA-508 Grade 3, Class 1 .....	55
HBB-I-3000-5	Isochronous Stress–Strain Curves for 750°F (399°C) for SA-533 Type B, Class 1 and SA-508 Grade 3, Class 1 .....	56
HBB-I-3000-6	Isochronous Stress–Strain Curves for 800°F (427°C) for SA-533 Type B, Class 1 and SA-508 Grade 3, Class 1 .....	57
HBB-I-3000-7	Isochronous Stress–Strain Curves for 850°F (454°C) for SA-533 Type B, Class 1 and SA-508 Grade 3, Class 1 .....	58
HBB-I-3000-8	Isochronous Stress–Strain Curves for 900°F (482°C) for SA-533 Type B, Class 1 and SA-508 Grade 3, Class 1 .....	59
HBB-I-3000-9	Isochronous Stress–Strain Curves for 950°F (510°C) for SA-533 Type B, Class 1 and SA-508 Grade 3, Class 1 .....	60
HBB-I-3000-10	Isochronous Stress–Strain Curves for 1,000°F (538°C) for SA-533 Type B, Class 1 and SA-508 Grade 3, Class 1 .....	61
HBB-I-3000-11	Design Fatigue Strain Range for SA-533 Type B, Class 1 and SA-508 Grade 3, Class 1 .....	62
HBB-I-3000-12	Creep–Fatigue Damage Envelope for SA-533 Type B, Class 1 and SA-508 Grade 3, Class 1 .....	63
HBB-I-3000-13	$S_t$ vs. Time–Isothermal Curves for SA-533 Type B, Class 1 and SA-508 Grade 3, Class 1 .....	64
HBB-I-3000-14	Minimum Stress Rupture as a Function of Time and Temperature for SA-533 Type B, Class 1 and SA-508 Grade 3, Class 1 .....	64

**Tables**

HBB-I-3000-1	$S_{mt}$ — Allowable Stress Intensity Values for SA-533 Type B, Class 1 and SA-508 Grade 3, Class 1 .....	65
HBB-I-3000-2	$S_t$ — Allowable Stress Intensity Values for SA-533 Type B, Class 1 and SA-508 Grade 3, Class 1, ksi (MPa) .....	65
HBB-I-3000-3	Allowable Stress Intensity Values for SA-533 Type B, Class 1 and SA-508 Grade 3, Class 1, $S_{m'}$ Yield Strength and Tensile Strength vs. Temperature .....	66
HBB-I-3000-4	Expected Minimum Stress-to-Rupture Values for SA-533 Type B, Class 1 and SA-508 Grade 3, Class 1, ksi (MPa).....	66
HBB-I-3000-5	Modulus Of Elasticity vs. Temperature for SA-533 Type B, Class 1 and SA-508 Grade 3, Class 1 .....	66
HBB-I-3000-6	Instantaneous Coefficient of Thermal Expansion vs. Temperature for SA-533 Type B, Class 1 and SA-508 Grade 3, Class 1.....	67
HBB-I-3000-7	Mean Coefficient of Thermal Expansion vs. Temperature for SA-533 Type B, Class 1 and SA-508 Grade 3, Class 1 .....	67
HBB-I-3000-8	Design Fatigue Strain Range for SA-533 Type B, Class 1 and SA-508 Grade 3, Class 1 Up to 1,000°F (540°C).....	68
<b>SUBSECTION HC</b>	<b>CLASS B METALLIC PRESSURE BOUNDARY COMPONENTS</b> .....	69
<b>Subpart A</b>	<b>Low Temperature Service</b> .....	69
<b>Article HCA-1000</b>	<b>Introduction</b> .....	69
HCA-1100	General .....	69
HCA-1110	Scope .....	69
<b>Article HCA-8000</b>	<b>Nameplates, Stamping With the Certification Mark, and Reports</b> .....	70
HCA-8100	Requirements.....	70
<b>Subpart B</b>	<b>Elevated Temperature Service</b> .....	71
<b>Article HCB-1000</b>	<b>Introduction</b> .....	71
HCB-1100	General .....	71
HCB-1110	Scope .....	71
HCB-1120	Alternative Design Rules .....	72
<b>Article HCB-2000</b>	<b>Material</b> .....	73
HCB-2100	General Requirements for Material.....	73
HCB-2400	.....	73
HCB-2430	.....	73
HCB-2500	.....	73
HCB-2570	.....	73
<b>Article HCB-3000</b>	<b>Design</b> .....	74
HCB-3100	General Design .....	74
HCB-3110	.....	74
HCB-3140	Buckling Instability Loadings .....	74
HCB-3150	Limitations on Use.....	75
HCB-3300	Vessel Design .....	75
HCB-3310	General Requirements.....	75
HCB-3400	Pump Design .....	75
HCB-3500	Valve Design.....	76
HCB-3510	General Requirements.....	76
HCB-3600	Piping Design .....	76
HCB-3630	General Requirements.....	76
<b>Article HCB-4000</b>	<b>Fabrication and Installation</b> .....	77
HCB-4100	General Requirements.....	77



HCB-4200	.....	77
HCB-4210	.....	77
HCB-4400	.....	77
HCB-4420	.....	77
<b>Figure</b>		
HCB-4215-1	Permissible Time/Temperature Conditions for Material That Has Been Cold Worked > 5% and < 20% and Subjected to Short-Time, High-Temperature Transients .....	78
<b>Article HCB-5000</b>	<b>Examination</b> .....	79
HCB-5100	General Requirements for Examination .....	79
<b>Article HCB-6000</b>	<b>Testing</b> .....	80
HCB-6100	General Requirements.....	80
HCB-6110	.....	80
HCB-6600	.....	80
HCB-6630	Alternative Tests of Closure Welds and Access Hatches.....	80
HCB-6640	Alternative Tests at Specially Designed Welded Seals .....	80
<b>Article HCB-7000</b>	<b>Overpressure Protection</b> .....	81
HCB-7100	General Requirements.....	81
HCB-7110	Scope .....	81
HCB-7140	.....	81
HCB-7200	.....	81
HCB-7220	Content of Report.....	81
HCB-7600	.....	82
HCB-7610	.....	82
HCB-7620	.....	82
<b>Article HCB-8000</b>	<b>Nameplates, Stamping With the Certification Mark, and Reports</b> .....	83
HCB-8100	Requirements.....	83
<b>Mandatory Appendices</b>		
<b>HCB-I</b>	<b>Stress Range Reduction Factor for Piping</b> .....	84
<b>Article HCB-I-1000</b>	<b>Stress Range Reduction Factor</b> .....	84
<b>Article HCB-I-2000</b>	<b>Maximum Number of Allowable Cycles With <math>f = 1</math></b> .....	85
<b>Article HCB-I-3000</b>	<b>Equivalent Cycle</b> .....	86
<b>Tables</b>		
HCB-I-2000-1	Stress Range Reduction Factor.....	87
HCB-I-2000-2	Maximum Number of Cycles, $N_1$ , Permissible With $f = 1$ .....	87
<b>HCB-II</b>	<b>Allowable Stress Values for Class B Components</b> .....	88
<b>Article HCB-II-1000</b>	<b>Scope</b> .....	88
<b>Article HCB-II-2000</b>	<b>Service With Negligible Creep Effects</b> .....	89
<b>Article HCB-II-3000</b>	<b>Service That May Include Creep Effects</b> .....	90
<b>Figure</b>		
HCB-II-1000-1	Allowable Stress Flowchart for Class B Component.....	91
<b>Tables</b>		
HCB-II-2000-1	Allowable Stress Values for Ferritic Steel Class B Components.....	92
HCB-II-2000-2	Allowable Stress Values for Class B Bolting Materials .....	97

HCB-II-2000-3	Allowable Stress Values for Austenitic Steel Class B Components.....	99
HCB-II-2000-4	Allowable Stress Values for High-Nickel Alloy Class B Components.....	106
HCB-II-2000-5	Reduction Factors for Aging .....	107
HCB-II-3000-1	Allowable Stress Values for Ferritic Steel Class B Components .....	108
HCB-II-3000-2	Allowable Stress Values for Class B Bolting.....	110
HCB-II-3000-3	Allowable Stress Values for Austenitic Steel Class B Components .....	111
HCB-II-3000-4	Allowable Stress Values for High-Nickel Alloy Class B Components .....	115
HCB-II-3000-5	Reduction Factors to Be Applied to Parent Metal Allowable Stresses for 304 SS Weldments.....	116
HCB-II-3000-6	Reduction Factors to Be Applied to Parent Metal Allowable Stresses for 316 SS Weldments.....	116
HCB-II-3000-7	Reduction Factors to Be Applied to Parent Metal Allowable Stresses for Alloy 800H Weldments.....	117
HCB-II-3000-8	Reduction Factors to Be Applied to Parent Metal Allowable Stresses for 2¼Cr-1Mo Weldments.....	117
HCB-II-3000-9	Reduction Factors to Be Applied to Parent Metal Allowable Stresses for Modified 9Cr-1Mo Weldments.....	118
<b>HCB-III</b>	<b>Time-Temperature Limits for Creep and Stress-Rupture Effects .....</b>	<b>119</b>
<b>Article HCB-III-1000</b>	<b>Introduction .....</b>	<b>119</b>
HCB-III-1100	Service Levels A and B Loadings.....	119
HCB-III-1200	Service Level C Events .....	119
<b>Figure</b>		
HCB-III-1000-1	Time-Temperature Limits for Service Level A and B Events .....	120
<b>Table</b>		
HCB-III-1000-1	Maximum Metal Temperatures During Level C Events .....	120
<b>SUBSECTION HF</b>	<b>CLASS A AND CLASS B METALLIC SUPPORTS.....</b>	<b>121</b>
<b>Subpart A</b>	<b>Low Temperature Service .....</b>	<b>121</b>
<b>Article HFA-1000</b>	<b>Introduction .....</b>	<b>121</b>
HFA-1100	General .....	121
HFA-1110	Scope.....	121
<b>SUBSECTION HG</b>	<b>CLASS A METALLIC CORE SUPPORT STRUCTURES.....</b>	<b>123</b>
<b>Subpart A</b>	<b>Low Temperature Service .....</b>	<b>123</b>
<b>Article HGA-1000</b>	<b>Introduction .....</b>	<b>123</b>
HGA-1100	General .....	123
HGA-1110	Scope.....	123
<b>Article HGA-8000</b>	<b>Nameplates, Stamping With the Certification Mark, and Reports .....</b>	<b>124</b>
HGA-8100	Requirements.....	124
<b>Subpart B</b>	<b>Elevated Temperature Service .....</b>	<b>125</b>
<b>Article HGB-1000</b>	<b>Introduction .....</b>	<b>125</b>
HGB-1100	General .....	125
HGB-1110	Scope .....	125
HGB-1120	.....	126

<b>Article HGB-2000</b>	<b>Material</b> .....	127
HGB-2100	General Requirements for Material .....	127
HGB-2120	.....	127
HGB-2160	Deterioration of Material in Service .....	127
HGB-2400	.....	127
HGB-2430	.....	127
<b>Article HGB-3000</b>	<b>Design</b> .....	128
HGB-3100	General Design .....	128
HGB-3110	.....	128
HGB-3120	.....	130
HGB-3130	.....	130
HGB-3200	Design by Analysis .....	130
HGB-3210	Design Criteria .....	130
HGB-3220	Design Rules and Limits or Load-Controlled Stresses in Structures Other Than Threaded Structural Fasteners .....	135
HGB-3230	Stress Limits for Load Controlled Stresses in Threaded Structural Fasteners .....	142
HGB-3240	Special Requirements for Elevated Temperature Components .....	143
HGB-3250	Limits on Deformation-Controlled Quantities .....	143
HGB-3300	.....	143
HGB-3350	.....	143
<b>Figures</b>		
HGB-3224-1	Use-Fractions for Membrane Stress.....	140
HGB-3224-2	Use-Fractions for Membrane Plus Bending Stress .....	140
<b>Table</b>		
HGB-3217-1	Classification of Stress Intensity for Some Typical Cases .....	136
<b>Article HGB-4000</b>	<b>Fabrication and Installation</b> .....	145
HGB-4100	General Requirements .....	145
HGB-4200	.....	145
HGB-4210	.....	145
HGB-4230	.....	145
HGB-4400	.....	146
HGB-4420	.....	146
<b>Article HGB-5000</b>	<b>Examination</b> .....	147
HGB-5100	General Requirements for Examination .....	147
HGB-5200	.....	147
HGB-5220	Requirements for Radiography or Ultrasonic and Liquid Penetrant or Magnetic Particle Examination .....	147
<b>Figures</b>		
HGB-5223-1	Full Penetration Corner Weld Details for Category C Joints.....	149
HGB-5224.2-1	Nozzles Joined by Full Penetration Corner Welds.....	150
HGB-5224.3-1	Deposited Weld Metal Used as Reinforcement of Openings for Nozzles .....	151
HGB-5224.4-1	Oblique Connections .....	152
<b>Article HGB-8000</b>	<b>Nameplates, Stamping With the Certification Mark, and Reports</b> .....	153
HGB-8100	Requirements.....	153
<b>Mandatory Appendices</b>		
<b>HGB-I</b>	<b>Rules for Strain, Deformation, and Fatigue Limits at Elevated Temperatures</b> .....	155
<b>Article HGB-I-1000</b>	<b>Introduction</b> .....	155

<b>HGB-II</b>	<b>Rules for Construction of Core Support Structures, Extended for Restricted Service at Elevated Temperature, Without Explicit Consideration of Creep and Stress-Rupture .....</b>	<b>156</b>
<b>Article HGB-II-1000</b>	<b>Introduction .....</b>	<b>156</b>
HGB-II-1100	.....	156
HGB-II-1110	Aspects of Construction Covered by These Rules .....	156
<b>Article HGB-II-2000</b>	<b>Materials .....</b>	<b>157</b>
HGB-II-2100	.....	157
HGB-II-2120	.....	157
HGB-II-2400	.....	157
HGB-II-2430	.....	157
<b>Tables</b>		
HGB-II-2121-1	Design Stress Intensity Values, $S_{m'}$ , for Ferritic Steels at Elevated Temperatures in Core Support Structure Applications.....	158
HGB-II-2121-2	Design Stress Intensity Values, $S_{m'}$ , for Ferritic Steels at Elevated Temperatures in Threaded Structural Fastener Applications.....	160
HGB-II-2121-3	Design Stress Intensity Values, $S_{m'}$ , for Austenitic and High Nickel Alloys at Elevated Temperatures in Core Support Structure Applications ...	162
HGB-II-2121-4	Design Stress Intensity Values, $S_{m'}$ , for Austenitic and High Nickel Alloys at Elevated Temperatures in Threaded Structural Fastener Applications .....	166
<b>Article HGB-II-3000</b>	<b>Design .....</b>	<b>168</b>
HGB-II-3100	.....	168
HGB-II-3110	.....	168
HGB-II-3112	.....	168
HGB-II-3130	.....	168
HGB-II-3200	.....	168
HGB-II-3210	.....	168
HGB-II-3220	.....	168
HGB-II-3230	.....	172
<b>Tables</b>		
HGB-II-3222.4-1	Design Fatigue Limits for Solution Annealed Type 304SS.....	174
HGB-II-3222.4-2	Design Fatigue Limits for Solution Annealed Type 316SS.....	175
HGB-II-3222.4-3	Design Fatigue Limits for Ni-Cr-Fe Alloy 800H .....	176
HGB-II-3222.4-4	Design Fatigue Limits for 2 $\frac{1}{4}$ Cr-1Mo Steel.....	177
HGB-II-3229-1	Yield Strength Values, $S_y$ , for Ferritic Steels at Elevated Temperatures in Core Support Structure Applications.....	178
HGB-II-3229-2	Yield Strength Values, $S_y$ , for Ferritic Steels at Elevated Temperatures in Threaded Structural Fastener Applications .....	180
HGB-II-3229-3	Yield Strength Values, $S_y$ , for Austenitic and High Nickel Alloys at Elevated Temperatures in Core Support Structure and Threaded Structural Fastener Applications .....	182
HGB-II-3229-4	Tensile Strength Values, $S_u$ , for Ferritic Steels at Elevated Temperatures in Core Support Structure Applications.....	183
HGB-II-3229-5	Tensile Strength Values, $S_u$ , for Ferritic Steels at Elevated Temperatures in Threaded Structural Fastener Applications .....	185
HGB-II-3229-6	Tensile Strength Values, $S_u$ , for Austenitic and High Nickel Alloys at Elevated Temperatures in Core Support Structure and Threaded Structural Fastener Applications .....	186
<b>Article HGB-II-4000</b>	<b>Fabrication and Installation Requirements .....</b>	<b>187</b>
HGB-II-4100	.....	187
HGB-II-4200	.....	187
HGB-II-4230	.....	187
<b>Article HGB-II-5000</b>	<b>Examination Requirements.....</b>	<b>188</b>

**Mandatory Appendices**

<b>HGB-III</b>	<b>Buckling and Instability</b> .....	189
<b>Article HGB-III-1000</b>	<b>General Requirements</b> .....	189
<b>Article HGB-III-2000</b>	<b>Buckling Limits: Time-Independent Buckling</b> .....	190
<b>Article HGB-III-3000</b>	<b>Alternative Procedures</b> .....	191
<b>Table</b>		
<b>HGB-III-2000-1</b>	<b>Time-Independent Buckling Limits</b> .....	192
<b>HGB-IV</b>	<b>Time–Temperature Limits</b> .....	193
<b>Article HGB-IV-1000</b>	<b>Time–Temperature Limits</b> .....	193
<b>Figures</b>		
<b>HGB-IV-1000-1</b>	<b>Time at Elevated Temperature, hr</b> .....	194
<b>SUBSECTION HH</b>	<b>CLASS A NONMETALLIC CORE SUPPORT STRUCTURES</b> .....	195
<b>Subpart A</b>	<b>Graphite Materials</b> .....	195
<b>Article HHA-1000</b>	<b>Introduction</b> .....	195
<b>HHA-1100</b>	<b>Scope</b> .....	195
<b>HHA-1110</b>	<b>Aspects Covered</b> .....	195
<b>HHA-1120</b>	<b>Environmental Effects and Limits</b> .....	195
<b>HHA-1200</b>	<b>Requirements</b> .....	195
<b>HHA-1210</b>	<b>General</b> .....	195
<b>HHA-1220</b>	<b>Materials</b> .....	196
<b>HHA-1230</b>	<b>Design</b> .....	196
<b>HHA-1240</b>	<b>Graphite Core Component Machining</b> .....	196
<b>HHA-1250</b>	<b>Installation</b> .....	196
<b>HHA-1260</b>	<b>Responsibilities</b> .....	196
<b>HHA-1300</b>	<b>Application of These Rules</b> .....	196
<b>HHA-1400</b>	<b>Boundaries of Jurisdiction</b> .....	196
<b>HHA-1410</b>	<b>Boundary Between Graphite Core Components and Core Support Structures</b> .....	196
<b>HHA-1420</b>	<b>Boundary Between Graphite Core Components and Fuel Pebbles or Compacts</b> .....	196
<b>HHA-1430</b>	<b>Other Boundaries</b> .....	196
<b>Figures</b>		
<b>HHA-1400-1</b>	<b>Jurisdictional Boundary for Graphite Core Components and Assemblies — Circumferential Section View</b> .....	197
<b>HHA-1400-2</b>	<b>Jurisdictional Boundary for Graphite Core Components and Assemblies — Longitudinal Section View</b> .....	198
<b>Article HHA-2000</b>	<b>Materials</b> .....	199
<b>HHA-2100</b>	<b>General Requirements</b> .....	199
<b>HHA-2110</b>	<b>Material for Graphite Core Components</b> .....	199
<b>HHA-2120</b>	<b>Certification of Material</b> .....	199
<b>HHA-2130</b>	<b>Deterioration of Materials During Service</b> .....	199
<b>HHA-2140</b>	<b>Material Identification</b> .....	200
<b>HHA-2200</b>	<b>Material Properties for Design</b> .....	200
<b>HHA-2210</b>	<b>As-Manufactured Material Properties</b> .....	200
<b>HHA-2220</b>	<b>Irradiated Material Properties</b> .....	200
<b>HHA-2230</b>	<b>Oxidized Material Properties</b> .....	200
<b>HHA-2300</b>	<b>Sampling</b> .....	201
<b>HHA-2310</b>	<b>General Requirements</b> .....	201

HHA-2400	Material Manufacturer’s Quality System Program .....	201
HHA-2500	Examination and Repair of Graphite Core Component Material.....	201
HHA-2510	Examination.....	201
HHA-2520	Repair.....	201
HHA-2600	Packaging, Transportation, and Storage.....	201
<b>Article HHA-3000</b>	<b>Design</b> .....	202
HHA-3100	General Design.....	202
HHA-3110	Graphite Core Components.....	202
HHA-3120	Loading Criteria .....	203
HHA-3130	Nomenclature .....	204
HHA-3140	Special Considerations .....	204
HHA-3200	Design by Analysis — Graphite Core Components .....	206
HHA-3210	Design Criteria for Graphite Core Components .....	206
HHA-3220	Stress Limits for Graphite Core Component — Simplified Assessment .....	210
HHA-3230	Probability of Failure Limits for Graphite Core Components — Full Assessment .....	214
HHA-3240	Experimental Limits — Design by Test .....	216
HHA-3300	Requirements for Design of the Graphite Core Assembly.....	216
HHA-3310	General Requirements.....	216
HHA-3320	Design Considerations .....	216
HHA-3330	Design of the Graphite Core Assembly .....	217
<b>Figures</b>		
HHA-3141-1	Dependence of Strength on Weight Loss in Uniformly Oxidized Graphite of Classes IIHP or INHP .....	205
HHA-3141-2	Dependence of Strength on Weight Loss in Uniformly Oxidized Graphite of Classes EIHP, ENHP, MIHP, and MNHP .....	206
HHA-3221-1	Design Allowable Stresses Flowchart for SRC-1 Graphite Core Component.....	212
<b>Table</b>		
HHA-3221-1	Design Allowable Probability of Failure .....	211
<b>Article HHA-4000</b>	<b>Machining, Examination, and Testing</b> .....	218
HHA-4100	General Requirements.....	218
HHA-4110	Introduction .....	218
HHA-4120	Certification of Materials and Machining by the Graphite Core Component Manufacturer .....	218
HHA-4130	Joining.....	218
HHA-4200	Machining, Examination, and Testing .....	218
HHA-4218	Procedures, Qualification, and Evaluation .....	218
HHA-4220	Graphite Core Component Machining .....	219
HHA-4230	Graphite Core Component Examination.....	219
HHA-4240	Graphite Core Component Testing.....	221
HHA-4250	Graphite Core Component Packaging.....	221
<b>Tables</b>		
HHA-4222-1	Prohibited and Controlled Substances.....	220
<b>Article HHA-5000</b>	<b>Installation and Examination</b> .....	222
HHA-5100	General Requirements.....	222
HHA-5110	Introduction .....	222
HHA-5200	Storage, Unpackaging, and Examination.....	222
HHA-5210	Storage and Unpackaging.....	222
HHA-5220	Examination of Graphite Core Components.....	222
HHA-5300	Installation .....	223
HHA-5310	Documentation.....	223
HHA-5400	Examination During Installation .....	223
HHA-5500	Examination Post-Installation .....	223

Article HHA-8000	Nameplates, Stamping, and Reports.....	224
HHA-8100	Requirements.....	224
<b>Mandatory Appendices</b>		
<b>HHA-I</b>	<b>Graphite Material Specifications.....</b>	<b>225</b>
Article HHA-I-1000	Introduction .....	225
HHA-I-1100	Scope .....	225
HHA-I-1110	Material Specifications .....	225
<b>HHA-II</b>	<b>Requirements for Preparation of a Material Data Sheet.....</b>	<b>226</b>
Article HHA-II-1000	Introduction.....	226
Article HHA-II-2000	Material Data Sheet Forms.....	227
<b>Forms</b>		
MDS-1	Material Data Sheet (SI Units).....	228
MDS-2	Material Data Sheet (U.S. Customary) .....	229
<b>Tables</b>		
HHA-II-2000-1	Notes on Material Data Sheet, Forms MDS-1 and MDS-2.....	230
Article HHA-II-3000	Detailed Requirements for Derivation of the Material Data Sheet — <b>As-Manufactured Properties</b> .....	232
HHA-II-3100	Material Reliability Curve Parameters (Two Parameter for Simple Assessment).....	232
HHA-II-3200	Material Reliability Curve Parameters (Three Parameter for Full Assessment).....	232
HHA-II-3300	Design Allowable Stress Value.....	233
<b>Figures</b>		
HHA-II-3100-1	Correction Factor $T$ of the Shape Parameter $M$ of Two-Parameter Weibull Distribution ( $\gamma = 0.95$ ).....	233
HHA-II-3100-2	Correction Factor $T'$ of the Characteristic Value $S_c$ of Two Parameter Weibull Distribution ( $\gamma = 0.95$ ).....	233
Article HHA-II-4000	Detailed Requirements for Derivation of the Material Data Sheet — <b>Irradiated Material Properties</b> .....	234
HHA-II-4100	General .....	234
<b>HHA-III</b>	<b>Requirements for Generation of Design Data for Graphite Grades .....</b>	<b>235</b>
Article HHA-III-1000	Scope.....	235
Article HHA-III-2000	General Requirements.....	236
Article HHA-III-3000	Properties to Be Determined.....	237
HHA-III-3100	As-Manufactured Graphite .....	237
HHA-III-3200	Oxidized Graphite .....	237
HHA-III-3300	Irradiated Graphite.....	237
Article HHA-III-4000	Requirement for Representative Data.....	238
HHA-III-4100	As-Manufactured Graphite .....	238
HHA-III-4200	Irradiated or Oxidized Graphite.....	238

<b>Article HHA-III-5000</b>	<b>Use of Historical Data .....</b>	<b>239</b>
<b>Nonmandatory Appendices .....</b>		<b>240</b>
<b>HHA-A</b>	<b>Graphite as a Structural Material .....</b>	<b>240</b>
<b>Figures</b>		
HHA-1160-1	Extrusion .....	241
HHA-1160-2	Molding .....	241
<b>Article HHA-A-1000</b>	<b>Introduction .....</b>	<b>240</b>
HHA-A-1100	Manufacture.....	240
HHA-A-1110	Raw Material Preparation.....	240
HHA-A-1120	Mixing and Forming.....	242
HHA-A-1130	Baking and Impregnation .....	242
HHA-A-1140	Graphitization .....	242
HHA-A-1150	Finishing (Purification) .....	242
HHA-A-1160	Grain Orientation.....	242
<b>HHA-B</b>	<b>Effects of Fast Neutron Irradiation on Graphite.....</b>	<b>243</b>
<b>HHA-C</b>	<b>Effects of Oxidation on Graphite.....</b>	<b>244</b>
<b>HHA-D</b>	<b>Guidance on Defects and Flaws in Graphite .....</b>	<b>245</b>
<b>Subpart B</b>	<b>Composite Materials .....</b>	<b>246</b>
<b>Article HHB-1000</b>	<b>Introduction .....</b>	<b>246</b>
HHB-1100	General .....	246
HHB-1110	Scope.....	246
<b>Division 5 Endnotes</b>	<b>.....</b>	<b>247</b>