



Fall 2012 Edition

Table of Contents



**ASME ERTD
Report
Page—3**

**NEMB Congress
2013
Page—6**

**Volunteer
Opportunities
Page—10**

**IMECE
Opportunities
Page—1**

**Student Section
Toolkit
Page—5**

**Eclipse Intern
Program
Page—8**

K&C Leadership News

Get Involved with ASME Emerging Technology and Nanotechnology at IMECE 2012



The ASME International Mechanical Engineering Congress and Exposition (IMECE) is November 9–15, 2012 in Houston, Texas. Check out these opportunities to share your expertise with and gain knowledge from your colleagues! Visit asmeconferences.org/Congress2012 for more information and to sign up for the programs outlined below.

ASME Seeking Emerging Technology Subject Matter Experts to Share Knowledge and Get Involved

ASME is offering engineers and students a great opportunity to explore the role of engineering in new environmental and sustainability technologies. Thermal energy storage, integrated/sustainable buildings equipment and systems, and energy-water nexus will be addressed through activities sponsored by the ASME Emerging Technologies unit:

Numerous **technical sessions and panel sessions** will be presented in each of these topical areas throughout the week:

- Track 6-13: Symposium in Thermal Energy Storage
- Track 6-5: Symposium on Energy-Water Nexus
- Track 6-6: Energy-Water Nexus Power Plant Cooling
- Track 14-2: Symposium in Integrated/Sustainable Building Equipment & Systems

Each of the Emerging Technologies task forces connected to these three topical areas will be holding business meetings in Houston. **We are seeking experts from other ASME divisions and units to join and assist in the development and expansion of these multidisciplinary activities:**

- Thermal Energy Storage Task Force meeting — Wed, Nov 14, 2 pm – 3 pm
- Integrated/Sustainable Buildings Equipment & Systems Task Force meeting—Tue, Nov 13, 7 pm–8:30 pm
- Energy-Water Nexus Interdisciplinary meeting — Wed, Nov 14, 6:30 pm–8 pm

Please check the IMECE program for meeting locations. For further information, contact Brandy Smith at smithb@asme.org.

K&C Leadership News

Get Involved with ASME Emerging Technology and Nanotechnology at IMECE 2012 (Cont'd from above)



Nanotechnology Learning and Networking Opportunities

Engineers and students will have the opportunity to network with ASME's leading nanotechnology experts at IMECE. Events include:

Society-Wide Micro and Nanotechnology Forum, Tuesday, November 13, 3 pm–8 pm:

More than 200 posters presenting the latest research in nanotechnology will be featured in this National Science Foundation-supported initiative. Awards will be given by seven ASME Divisions, including Materials, Bioengineering, Applied Mechanics, Fluids, MEMS, Heat Transfer, and Electronic and Photonic Packaging. Reception and awards ceremony to follow the poster session.

Tracks and panel sessions:

- **Track 2-12: NanoEngineering for Medicine and Biology.** Topics range from electrospun scaffolds to atomic force microscopy.
- **Track 10-6: NanoEngineering for Energy and Sustainability.** Areas explored include thermal transport and energy storage. A panel session (10-6-7) will address nanoscale fabrication. Panel session 10-6-8 will feature a discussion about the NSF National Nanotechnology Infrastructure Initiative (NNIN) and its role in promoting nanoscience development in industry and academia.

ASME Nanotechnology Committee Meetings:

All are welcome to attend the planning sessions for future ASME nanotechnology initiatives. Attendees can meet our community of subject matter experts and explore volunteer opportunities within the committees.

- NanoEngineering Council
Monday, November 12, 2:30 pm–4 pm
- NEMB Steering Committee
Monday, November 12, 1 pm–2:30 pm
- NEES Steering Committee
Monday, November 12, 10 am–11:30 am

Check the IMECE website for updates on meeting room locations. For further information, contact Christine Reilly at reilleyc@asme.org.

K&C Leadership News

ASME Engineering Research and Technology Development (ERTD)

Department Serves Members Better Than Ever

Over the past year, ASME has combined three staff departments into one to better serve members and allow for increased collaboration for improved future tools. This new department, Engineering Research and Technology Development (ERTD), combines the best aspects of Institutes, K&C, and Events Management with a new structure that focuses on building and supporting content that's technically and locally relevant to you while also helping you meet colleagues who can inform and enrich your work.

The ERTD staff team is designed to best leverage resources to address organization and member needs that include:

- Facilitating individual and group participation and sharing information, especially on our revamped website, ASME.org.
- **Enhancing existing products and expanding products available.**
- Identifying, validating, and fostering emerging technologies and opportunities.
- **Ensuring compliance with ASME policies and procedures.**
- Providing tools, training, and administrative support to Society units.
- **Developing and communicating success metrics.**
- Cultivating a culture of customer service and mutual respect.

Through four focus areas—Knowledge, Communities and Services, Events Management, and Institutes—ERTD will work on behalf of volunteers and other members. With Charity Golden coming on board as Operations Director of IGTI and Tim Graves continuing his work as Operations Director of IPTI, Institutes will continue to handle operational logistics and collaborate with ASME staff. Events Management, led by Phyllis Klasky, will coordinate all enterprise-wide events, including IMECE, the annual meeting, and new society-wide events that are not tied to custodian funds. Under Director Elio Manes, Communities and Services has grown to more effectively facilitate our volunteer services, governance committees, and geographically-based and affinity communities, as well as to support all other ERTD units.



K&C Leadership News

ASME Engineering Research and Technology Development (ERTD)

Department Serves Members Better Than Ever (*Cont'd from above*)

And with recent addition Randy Reagan as Director of Engineering Knowledge and program managers with event planning experience, the Knowledge unit will enable volunteers to innovate and enhance technical programs instead of worrying about the minutiae of meeting logistics.

“It has been an exciting year as we underwent significant change and created implementation plans for new policies and better business practices,” says ERTD Managing Director Mike Ireland, who oversaw the department’s restructuring. “As with any significant change, we had some challenges, but we have been working with each of our volunteer groups to foster better communication and teamwork that will continue to benefit ASME and our communities.”

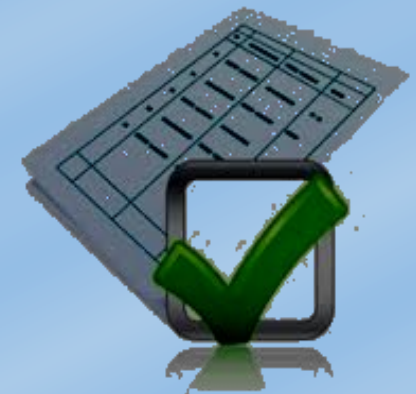
As the ERTD department continues to advocate for mechanical engineers and provide increased support, we look forward to the ideas our innovative, remarkable volunteers will uncover for more programming that improves the industry—and subsequently the quality of life for all. For more information about ERTD and our new restructuring, contact Kyle Leigh Avery at LeighAveryK@asme.org or 212.591.7561.

DOES YOUR EVENT COMPLY WITH THE POLICY?

If your ASME unit—be it a Division, Section or associated Technical Chapter, or even a District Board—put on an event that will utilize \$50,000 or more out of your custodial or operations (bank) account, we need to hear about it!

To comply with Policy P-12.1, these larger programs must now be processed through the Event Planning & Approval Tool (EPAT) for approval by the Event Committee.

Be sure to let us know if your event meets these parameters! For more information, please contact Kyle Leigh Avery at leighaveryk@asme.org or 212.591.7561.



K&C Leadership News

ASME STUDENT SECTION TOOLKIT

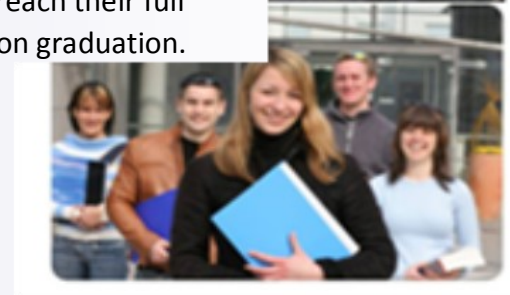
University Outreach Program Now in Its Second Year

After the success of last year's program, ASME's membership development and marketing teams have created an updated ASME Student Section Membership Toolkit. The toolkits were distributed to all U.S. and Canadian student section faculty advisors at the end of August to be available for use at the beginning of the new school year.

The toolkits are designed to be shared with the student section leaders and student section members at meetings, on-campus recruitment events, and any number of additional related activities. The contents of the updated toolkit are similar to those in the original, with an additional focus placed on communicating student membership benefits incorporated throughout the new edition. The updated toolkits include student membership posters, student brochures, student membership applications, a series of nine informational flyers, member stickers, templates to create custom materials, ASME-branded flashlight key chains, and more.

The ASME Student Section Toolkit initiative is part of ASME's ongoing efforts to engage mechanical engineering students early in their academic careers to broaden their engineering community experience, help them reach their full potential, and encourage them to continue their relationship with ASME as a professional member upon graduation.

For more information, contact Kyle Leigh Avery at LeighAveryK@asme.org or 212.591.7561.



K&C Leadership News

NEMB2013 ASME 2013 2ND GLOBAL CONGRESS ON
NANOENGINEERING FOR MEDICINE & BIOLOGY
February 4-6, 2013 • Boston, Massachusetts



Join ASME for three days of networking and exciting innovations at the NanoEngineering for Medicine and Biology (NEMB) Congress on February 4–6, 2013 in Boston, Massachusetts.

NEMB will address the integration of engineering, materials science, and nanotechnology in addressing fundamental problems in biology and medicine. Tracks will focus on developing devices, materials, and methods for the early detection, imaging of pathological and physiological mechanisms, and treatment of disease.

Co-organizers include Dr. Markus Buehler of MIT and Dr. Mehmet Toner of Harvard. The Technical Program Chair is Dr. Guy Genin of Washington University, St. Louis. Technical Co-Chairs are Dr. Paolo Decuzzi of the Methodist Hospital Research Institute and Prof. John Bischof of the University of Minnesota. Plenary speakers include tissue engineering innovator Robert Langer of MIT and organ-on-a-chip pioneer Don Ingber of Harvard.

More information, including the complete slate of plenaries, keynotes, and tracks, is listed on the NEMB 2013 website at <https://www.asmeconferences.org/NEMB2013>.

For further information about NEMB 2013 or any ASME nanotechnology initiatives, contact Christine Reilley at reilleyc@asme.org.

K&C Leadership News

CALL FOR PAPERS

Call for Papers for the 2013 Power Conference

ASME Power is accepting abstract submissions for the 2013 Power Conference taking place July 29–August 1, 2013 in Boston, Massachusetts. If you're interested in engaging with the operating, maintenance, and equipment challenges of a power plant with expert insiders, as well as learning the latest methods and cutting-edge technologies that will improve how power plants operate in the future, then this is a can't-miss opportunity.

Abstracts are due on November 15!

For more information about pertinent article topics, submitting your abstract, and the publications schedule, please visit www.asmeconferences.org/power2013. For additional questions, contact Kyle Leigh Avery at LeighAveryK@asme.org.

Engineering Ethics Video Humanizes Tough Decisions

Professional ethics in engineering can be challenging to make tangible, but the National Institute for Engineering Ethics created a 30-minute film entitled *Henry's Daughters* that can help invite discussion of ethical issues in an engaging and understandable way.

The movie follows three family members working on a highway design project as they face ethical issues like conflicts of interest, sexual harassment, intellectual property, and individual privacy. They disagree over the tradeoffs between technical performance, safety, reliability, and cost and discover how political and social factors can influence technical decisions.

In recognition of its \$5,000 contribution toward the development of *Henry's Daughters*, ASME received five copies of the DVD. If an ASME unit would like to borrow one, please e-mail the request to Dave Soukup at soukupd@asme.org.



K&C Leadership News



ECLIPSE Intern Program Helps Early Career Engineers Become Connected Professionals

Are you an ASME member who has 3-10 years of professional experience as an engineer?

ASME has a phenomenal program to help you advance your career. The Early Career Leadership Intern Program to Serve Engineering (ECLIPSE) gives early career engineers an opportunity to spend a year working directly with senior leaders within ASME while allowing them to gain exposure and forge their own path to leadership within the society. ECLIPSE interns:

- Experience one-on-one mentoring and professional development
- Gain access to networking and training engagements, as well as engineering conferences
- Join an exclusive corps of ASME leaders-in-development
- Receive hands-on experience on sector projects

With a unique combination of guidance, training, networking, and leadership skill building, ECLIPSE is one of the many ways ASME supports members throughout their careers. Take advantage of this great opportunity now—applications are available for the 2013-2014 ECLIPSE program! For more information or to apply, visit go.asme.org/ECLIPSE or e-mail ECLIPSE@asme.org.

K&C Leadership News

Make a Difference at the 2013 Carbon Management Technology Conference



The Founders Society Carbon Management Committee is pleased to announce their plans for a second Carbon Management Technology Conference (CMTC) in 2013!

The final location and date are still to be determined, but the event will take place in the fall and in the DC/Baltimore area. CMTC will draw professionals from all engineering disciplines to share their expertise and provide perspectives on the reduction of greenhouse gas emissions and adaptation to changing climate. It will focus on engineering perspectives regarding key issues including technologies, strategies, policies, management systems, and metrics.

If you are interested in helping to plan or participating in programming or track committees, please contact Arnold Feldman at jjdsenv@att.net.

K&C Leadership News

ASME VOLUNTEER OPPORTUNITIES

Committee Volunteer Opportunities in the ASME Center for Research and Technology Development



Research Committee on Radiation Technologies

The **Research Committee on Radiation Technologies'** goal is to develop ASME programs and conferences focused on the use of electromagnetic (microwave, X-ray, gamma ray, etc.), acoustic (ultrasound), and particle beams for mechanical engineering applications. These powerful tools are finding increasing and often indispensable applications across the broad mechanical engineering disciplines.

As a member of this committee, you can help to incubate and develop technical programs and products in these evolving fields.

Research Committee on Energy, Environment and Waste

The **Research Committee on Energy, Environment, and Waste** conceptualizes, designs, and manages research projects and products with the purpose of gaining a greater understanding of and solving a broad spectrum of problems associated with environmental impacts of energy production/utilization as well as waste issues.

Topics that are and have been addressed include reference method accuracy and precision, emissions monitoring and control, waste management and/or treatment systems, landfills, and other technologies relating to waste materials. New areas of research interest include fuel cells, gasification, reforming, bio-fuels, solar, carbon sequestration, and nuclear energy.

For more information about these opportunities to make an impact on the field, contact Norma Johnston at johnstonn@asme.org or 202.785.7395.

K&C Leadership News

Preparations for Phase 2 of ASME.org:

What You Should Know about **Server Space** and **Facebook Pages**



You've already seen lots of great improvements on the new ASME.org, and the website will only get better and more useful in the future.

As part of the second phase of website changes, ASME will be adding a social media component that will help you connect to colleagues and members of your Districts, Sections, Groups, and Committees.

This new platform will include a variety of new group and community features for you to use for your online communications and group activities.

Current ASME members and volunteers will have an opportunity to learn more about the new features soon. In the meantime, ASME has implemented a few changes as we gear up for the big reveal:

- **Server Space**—ASME will not fulfill requests for new server space to host Sections, Student Sections, or Affinity Groups' websites.
- **Facebook Pages**—ASME units are encouraged to hold off on setting up new Facebook pages, as the new social media environment on ASME.org will have features that are similar to Facebook but are designed around the interests and passions of a global engineering community. In December 2012, all ASME chartered units will have an online presence as part of ASME.org.

For more information about Phase 2 of ASME.org or the new policies on server space and Facebook, contact Kyle Leigh Avery at LeighAveryK@asme.org or 212.591.7561.

K&C Leadership News

New Annual Plan Makes Looking Ahead Easier

Making planning easier & quantifiable for Fiscal year 2013



The ASME Committee on Division Operations and Training (CDOT) is constantly innovating to help Divisions assess and plan their activities. To make planning easier and more quantifiable, they developed an even better Annual Plan for Fiscal Year 2013 that helps Divisions communicate among the volunteer leadership and staff as they plan their annual activities and assess their effectiveness. The new Annual Plan has several notable improvements, including a Finance section, which contains key categories to help Divisions better assess and plan the use of their custodial account for product

As part of the new Annual Plan, ASME staff has also developed four reference reports unique to each Division, consisting of:

- **A list of existing committees (with volunteer head-counts for each)**
- **Primary membership demographics data for the last 5 years**
- **The Division's financial history over the last 5 years**
- **A list of division conferences submitted in the Event Planning and Approval Tool (EPAT), indicating event date, submission date, and current status**

sponsorship and services for member engagement.

This updated Annual Plan is just the beginning of enhancements, and CDOT will be reaching out to Divisions for input that will help make planning easy and straightforward. As ASME continues to improve its services, we look forward to giving you the tools to continuously improve your Division's impact and enhance members' knowledge and experience around the globe.

For more information about the new CIP or if you have questions about the upcoming changes, contact Kyle Leigh Avery at LeighAveryK@asme.org.

K&C Leadership News

Information & Communications Committee

Your K&C Leadership News
is brought to you by
**The Committee on
Information & Communications**



Jared Oehring
(Chairperson)
j.oehring@ssss.com



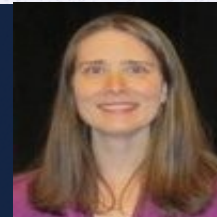
Tim Ganger
(Vice Chair)
ganger.4@gmail.com



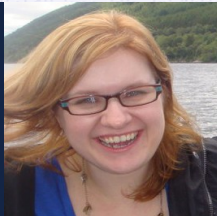
Marianne Chan
(Past Chairperson)
chanm@asme.org



Twishansh Mehta
(Member at Large)
mehtat2@asme.org



Anita Rebarchak
(Member at Large)
rebarchaka2@asme.org



Kyle Leigh Avery
(Staff Support)
leighAveryK@asme.org



Farhan Younas Mughal
(Newsletter Editor)
mughalf2@asme.org